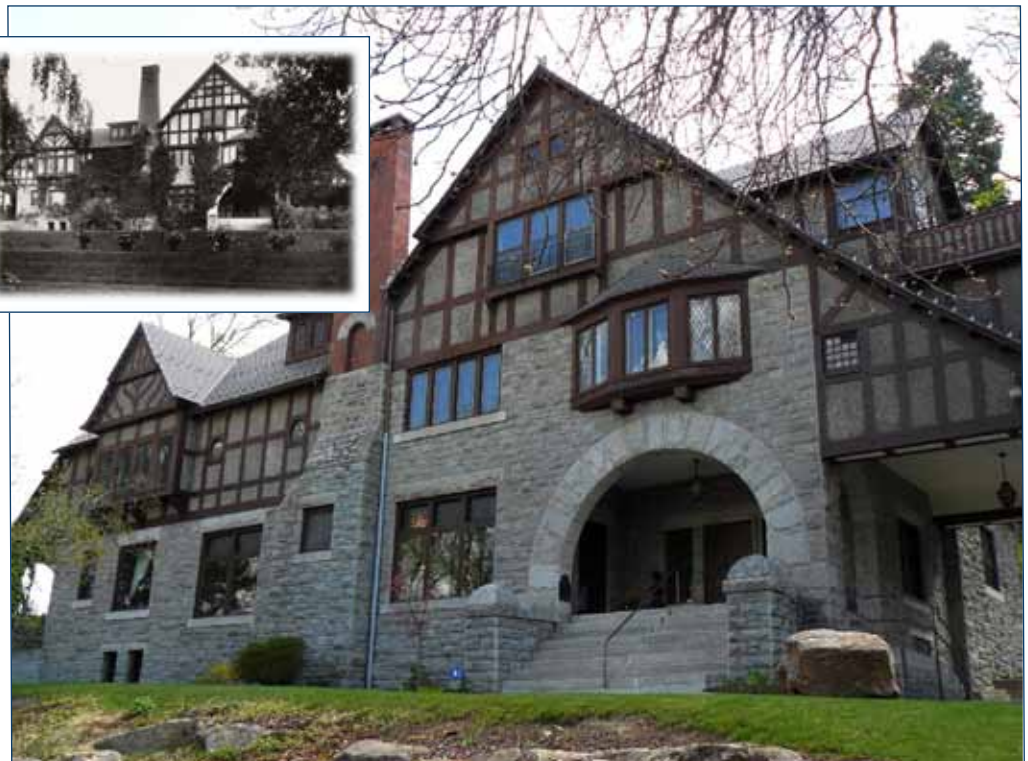


JAMES N. GLOVER MANSION ● 321 WEST EIGHTH AVENUE

Built in 1889, the Glover Mansion was one of Spokane architect Kirtland Cutter's first major architectural commissions.

The home is large with grandiose proportions and reflects historic precedents and stylistic influences from both Bavarian castle-like structures and broad British baronial manor houses. No other house in Spokane had been built or would ever be built with a design like the Glover Mansion.

Solidly situated on a steep hillside site, the Glover Mansion is a study in monumental cut granite stone and welcomes visitors to the recessed front entrance through a huge granite arch. Leaded-glass windows and false half-timbering in front-facing gables are reminiscent of homes in England,



(Inset) The James Glover Mansion, 1908 • (Large Photo) The stunning setting on Eighth Avenue as it looks today.

MARCH 14 2017 MEETING

PLEASE JOIN SPA
AT THE HISTORIC
**JAMES GLOVER
MANSION**

321 WEST 8TH AVENUE ● SOUTH HILL
TUESDAY, MARCH 14 ● 5:30 p.m.

Members and guests are encouraged to bring a bottle of wine or an hors d'oeuvres to share.

THE EVENT IS COMPLIMENTARY.

and massive tall brick chimneys tell of roaring fires that once warmed the mansion. A solid oak front door opens into an oak-paneled "great hall," an impressive room with an oak staircase, cathedral ceiling, second-floor galleries, and a private opera house box. The design for the wide arch at the exterior of the house is echoed in the home's great hall with multiple arches that lead to bedrooms and other rooms in the house. Notice the arch under the staircase and its intimate inglenook design with built-in

bench seats.

The house was built for James N. Glover, an entrepreneurial pioneer and city visionary who became known as one of the most prominent civic benefactors, bankers, businessmen, and "founding fathers" in Spokane.

The Glover Mansion is currently owned by Bob & Kim Adolfson, owners/proprietors of Glover Mansion Catering and Events, and serves as a venue for the Adolfson's business, playing host to more than 150 events a year. The Glover Mansion is listed on the Spokane, Washington State, and National Registers of Historic Places.

Continued • PAGE 2

SPA BOARD

EXECUTIVE COMMITTEE OFFICERS

- Bridget Piper**
PRESIDENT..... 344.1065
- Ann Keinholtz Jurceвич**
VICE PRESIDENT 344.1065
- Sheri Peters**
SECRETARY 838.2195
- Shaun Skidmore**
TREASURER..... 344.1065
- Paul Mann**
PAST PRESIDENT..... 344.1065

COMMITTEE CHAIRS, ET AL

- Joanne Moyer**
ADVISOR EMERITUS 727.1001
- Karen Dorn Steele**
ADVOCACY 344.1065
- Barbara T. Clapp**
ADVOCACY CO-CHAIR .. 344.1065
- Roynane Lisk**
COMMUNICATIONS..... 747.6524
- Patti Simpson Ward**
ART DIRECTOR UPDATE .. 344.1065
- Ann Keinholtz Jurceвич**
DEVELOPMENT..... 344.1065
- Kelly Lordan**
DOING-IT CHAIR 344.1065
- Jennifer Fees**
EDUCATION..... 344.1065
- Virginia Carter**
HOSPITALITY CHAIR..... 344.1065
- Greg True**
HERITAGE GRANTS 747.0230
- Rob McCoy**
Caitlin Shain
Tresa Schmautz 344.1065
MEMBERS AT LARGE

SPA STAFF

- Dave Shockley**..... 344.1065
EXECUTIVE COORDINATOR

All rights reserved. No part of this publication may be reproduced in any form without the express written permission of the Spokane Preservation Advocates. Author's opinions do not necessary reflect the official policies of Spokane Preservations Advocates nor the editor or publisher. ● While every effort has been made to avoid errors, Spokane Preservation Advocates does not assume any liability for errors or omissions.



SPA President Bridget Piper

MESSAGE FROM OUR PRESIDENT

"Historic Preservation is complex and constantly evolving..." states a recent *National Trust Issues* in Preservation forum article. SPA is also evolving as a non-profit organization whose goals to advocate, educate and preserve embrace complexity and change. While in a holding pattern with the Jensen-Byrd building, the Advocacy Committee continues to network with key leaders on this project. The Education Committee

added more hands-on demonstrations to its great workshops. The Historic Preservation Awards acknowledged preservations' sustainability value in Montvale Event Center, STCU's Hutton Building and the Iron Goat Brewery. SPA's preservation and economic value is being recognized by sponsors and civic leaders.

SPA's active board leaders, committees and some member volunteers are the engine, albeit small, making our accomplishments possible. Great events and sponsors help fuel our mission. As SPA's President these last two years, I have seen SPA continue to evolve and change ~ SPA is a dynamic organization. I appreciate this opportunity to be with Spokane's finest!

Join me in thanking board members Greg True and Karen Dorn Steele for their years of service and welcoming Ann Price, Rob McCoy, Caitlin Shain, Becky Holley Gupta and Tresa Schmautz to the 2017-2018 board.

● BRIDGET PIPER • President, Spokane Preservation Advocates

TABLE OF CONTENTS

- PAGE 1 ● LEAD ARTICLE**
- James N. Glover Mansion
 - March 14 Meeting Notice
- PAGE 2 ● YOUR ORGANIZATION**
- Board & Committee Chairs
 - President's Message
 - Annual Budget
- PAGE 3 ● LEAD ARTICLE & MORE**
- Glover & Cutter Biographies
 - Annual SPA Membership Meeting Notice
- PAGE 4 ● ADVOCACY**
- Places to Watch
- PAGE 5 ● SPECIAL EVENTS**
- The 2017 Annual Gala "Sparkle & Spend"
- PAGE 6 ● ANNOUNCEMENTS & MORE**
- WA Trust for Historic Preservation' RevitalizeWA
 - Old House Workshop
- PAGE 7 ● SPA MEMBERSHIP**
- New & Returning Members
 - Holiday Party Highlight
- PAGE 8 ● JOIN SPA**
- SPA Mission Statement
 - Features & Benefits of Becoming an SPA Member

2017-2018 SPA BUDGET OVERVIEW

| INCOME | |
|-------------------|---------------------------|
| 8,000 ● | Donations & Contributions |
| 12,000 ● | Membership Dues |
| 15,000 ● | Gala (net) |
| 6,500 ● | Home Tour (net) |
| 5,000 ● | Old House Workshop (net) |
| 4,000 ● | Other Events |
| \$50,500 ● | TOTAL INCOME |
| EXPENSES | |
| 10,000 ● | Heritage Fund Grant |
| 14,000 ● | Committee Expenditures |
| 500 ● | Program Expenses |
| 1,600 ● | Insurance |
| 2,800 ● | Office & Administration |
| 20,000 ● | Salary & Related |
| \$48,700 ● | TOTAL EXPENSES |



2017 ANNUAL SPA GENERAL MEMBERSHIP MEETING

The March General Membership Meeting is also the Annual Meeting for the organization. Please review the following prior to the March 14th meeting. The SPA Board of Directors approved the Nominating Committee's slate of Officers and Directors for 2017-2018 at its February 1st meeting. The Board recommends the following slate to the General Membership for a vote at the March 14th Annual Meeting:

OFFICERS

PRESIDENT

Ann Kienholz Jurcevic

VICE PRESIDENT

Ann Price

TREASURER

Shaun Skidmore

SECRETARY

Becky Holley Gupta

IMMEDIATE PAST PRESIDENT

Bridget Piper

BOARD MEMBERS

ADVOCACY COMMITTEE

Barb Clapp

COMMUNICATIONS COMMITTEE

Ro Lisk

DEVELOPMENT COMMITTEE

Tresa Schmautz

EDUCATION COMMITTEE

Jennifer Fees

DOING IT CHAIR

Kelly Lordan

HERITAGE GRANT COMMITTEE

Ann Price

MEMBERS AT LARGE

Sheri Peters

Rob McCoy

Caitlin Shain

ADVISORS EMERITUS

Joanne Moyer

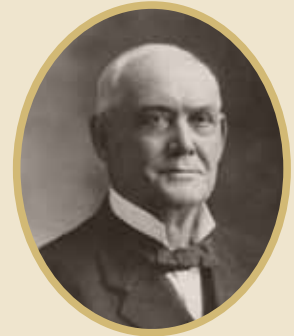
Paul Mann

HISTORIC PRESERVATION OFFICER

Megan Duvall

JAMES NETTLE GLOVER (1837 TO 1921)

Correctly called the "Father of Spokane," James Nettle Glover was one of the most prominent civic, business, mining, financial and government leaders the city has ever had. For 48 years, Glover "grew" the town, beginning in 1873 when he first purchased land by the Spokane River. A few years later, he carefully became the sole owner of 160 acres of undeveloped prime real estate in the center of downtown Spokane. He began making plans for the city in which he built, owned and operated a sawmill and a general store; operated as a forage agent for the Northern Pacific Railway; and helped incorporate, manage, and lead the First National Bank of Spokane. In 1879, he platted the first survey of the Spokane townsite and named the city's principal streets, many in honor of U. S. presidents, city leaders, personal friends, and favorite trees and plants. At different times, he served as city mayor, justice of the peace, and U.S. postmaster. Glover was a tall, large



"Father of Spokane" James M. Glover

man, commanding attention wherever he went, and was said to be a man of his word who backed his promises with money. This proved especially true when, during his lifetime, he made and lost three enormous fortunes but never lost a friend. Glover died as a less-than-well-to-do city leader in the last home he owned at 1408 North Summit Boulevard, and will be remembered always as one of Spokane's most prominent and prestigious pioneers.

KIRTLAND KELSEY CUTTER (1860 TO 1939)

In his book, *Kirtland Cutter: Architect in the Land of Promise*, Henry Matthews, wrote that "while many of his contemporaries have been relegated to the sidelines of history, Kirtland Cutter survives as a quintessential architect of his era." In his designs, he artfully interwove historic European precedents with Arts & Crafts simplicity and high-style revivalism, all the while extolling exotic, artificial environments rich in imagery. "He was an avowed eclectic who saw no conflict in drawing inspiration from diverse traditions and adapting them to modern life." Cutter was born in Ohio, studied at the Arts League of New York, traveled to Europe where he studied drawing, painting, and sculpture, and came to Spokane in 1887 to work for his uncle at the First National Bank. Drawn to architecture instead of banking, Cutter began designing homes and commercial buildings for his uncle's wealthy friends. He practiced with fellow architect, J. C. Poetz, partnered with Karl G. Malmgren, and



Acclaimed architect Kirtland K. Cutter

helped apprentice future prominent Spokane architects like Albert Held, Archibald Rigg and G. A. Pehrson. Cutter's designs with and without partners survive as some of Spokane's most unique residences and buildings, including the Davenport Hotel, Spokane Steam Plant, Fairmont Cemetery Chapel, Humbird Mansion (612 West Sumner) and the J. P. Graves House on Waikiki Road.

• LINDA YEOMANS
Spokane Preservation Consultant & Historian

ADVOCACY ● PLACES TO WATCH

These are a few of the historic places that make Spokane unique and which are being monitored by the Advocacy Committee of Spokane Preservation Advocates.



Jensen-Byrd Building and Trinity Catholic School

JENSEN-BYRD BUILDING ●

This imposing, six-story 1909 brick warehouse in Spokane's University District is supposed to undergo renovation after a long battle by SPA preservationists to save it from demolition. Washington State University, which purchased the building in 2001, announced early last year that a new partnership known for major projects in Spokane and Seattle had been chosen to develop it. The timetable has slipped to 2018. a Memorandum of Understanding for a ground lease between the new partners JB LLC and Washington State University still has not been signed. The partnership includes McKinstry Spokane and Trace Real Estate Services of Seattle.

McKinstry is a Seattle-based construction firm that renovated the historic Spokane and Inland Empire Railroad Building on the southeastern

edge of the new Spokane campus. It has won national awards for historic preservation and energy use. Estimated renovation costs: \$55 to \$61 million.

BROWNE'S ADDITION ●

Some residents in this neighborhood of fine old homes among apartment buildings are worried about the increased pace of tear-downs of historic structures.

The Browne's Addition

Neighborhood Committee voted last fall to conduct a survey to determine whether there is interest among property owners in creating stronger zoning protections in a new Browne's Addition Historic District. SPA member Rick Biggerstaff is leading the neighborhood effort. The group will canvass the neighborhood in February and is seeking volunteers for that effort.

TRINITY SCHOOL ●

Threatened with demolition, this Catholic kindergarten through eighth grade school is located at 1349 W. Montgomery next to St. Anthony's Church on Spokane's North Side. St. Anthony's Catholic Parish, in an application to the city last September, says it wants to replace the 1928 brick school with a modern school and child care facility ~ turning the old school site into a parking lot. The school is not on Spokane's register of historic places, so it has no protection or oversight from the county's Office of Historic Preservation.

CENTRAL UNITED METHODIST CHURCH ●

This imposing 1876 church at the corner of Third Avenue and Howard Street is up for sale, the victim of several trends affecting urban churches, including high maintenance costs and aging congregations. Its dwindling fellowship, shrunk to only a few dozen, disbanded. The final church service was held last September. Shalom Ministries, which provides 4,000 meals a week to Spokane's homeless, likely will have to move if a sale is completed, according to Rev. Stephen Johnson, the church's minister. The church is not protected by a historic register designation, so a new owner could demolish it ~ but the church has also been negotiating with other religious groups to take over the facility.

WONDER BREAD BUILDING ●

The aroma of fresh-baked bread used to waft from this 1909 building which occupies most of a city block between Lincoln and Post Streets and Mallon and Broadway Avenues. Continental Baking bought it in 1925 when it began to make Wonder Bread. It continued to operate until 2000. In September 2016, it was sold to the investor group Wonder Spokane LLC last September for \$3.025 million, according to *The Spokesman-Review*. The building likely will have mixed use, with businesses on the main floor and possibly residences above, according to Pete Mounsey, a spokesman for the LLC. Specifics of the plans have not been made public.

NORTHERN PACIFIC RAILWAY DEPOT ●

The 1929 depot in Cheney took a big step towards preservation in December when the Cheney Depot Society announced it had purchased a residential lot at First and I Streets to relocate the Spanish mission-style building. BNSF Railway has held on to the depot to give local preservationists a chance to find a relocation site. The depot could ultimately serve railroad passengers again because it sits next to the state-owned Palouse River and Coulee City Railroad, operated by the private Eastern Washington Gateway Railroad.

● KAREN DORN STEELE • SPA Advocacy Co-Chair



GALA

SAT., APRIL 8 • 5:30 PM

BARRISTER WINERY

AUCTION ITEMS



SOME OF THE AUCTION ITEMS (Clockwise)

1. Flight in the Vintage "Speed Mail"
2. Montvale Hall Package
3. Kay O'Rourke's Fine Art
4. Robert Brown's Chair
5. Paulsen Penthouse Package



ALL RIGHT, ALL YOU PRESERVATIONISTS!

Get out your "glad rags" ladies, powder your noses, touch up those gorgeous lips of yours ~ and join us at our Annual Gala on Saturday, April 8 at Barrister Winery. The festivities start at 5:30 pm!

One caveat ~ the floor boards in the winery are very old and uneven, some with spaces between, so we do NOT recommend wearing spiked heels for this year's event.

SPA has amazing items for you to bid on in both the Loud and Silent Auctions:

★ "SPEED MAIL" FLIGHT

A flight in Addison Pemberton's vintage aeroplane "Speed Mail"

★ ADIRONDACK CHAIR

By master wood-crafter Robert Brown of beautiful blond Cypress

★ CORK PULL

A cork pull set up by knowledgeable wine drinkers Jerry Baldwin and Jim Price. Every bottle is worth a minimum of \$20 ~ including some from Barrister owner Greg Lipsker's private collection as well as a 2011 Reserve Cab from Leonetti.

THIS IS WHERE WE GATHER FUNDS FOR OUR ADVOCACY, EDUCATION & PRESERVATION!

● ROYNANE LISK • Communications Chair



2017 GALA VENUE & PAST FUND-RAISERS (Top to Bottom)

1. "Sparkle & Spend" on April 8th!
2. Entrance to Barrister Winery
3. Interior Ambiance
4. Magnificently Laden Dessert Dash
5. Fine Wine and Conversation with Good Friends
6. Bidding for that Package or "Prize"



2017 REVITALIZE WA

● FROM THE WASHINGTON TRUST FOR HISTORIC PRESERVATION



2017 RevitalizeWA will take place this year in Downtown Ellensburg. The Washington Trust for Historic Preservation is working with the Ellensburg Downtown Association and local community partners to plan an excellent conference in this nationally accredited Washington Main Street Community.

This event runs from April 23rd through the 27th and the schedule is packed with workshops, tours, educational sessions and more ~ plus the "Excellence on Main" Awards Reception.

For more information and to register, please visit the Washington Trust for Historic Preservation web site.

DOING-IT UPDATE

At this time we have no projects in our pipeline, but some of our finest undertakings have come from suggestions from SPA members! So, please don't hesitate to contact me with your ideas. Winter is almost at an end despite that miserable groundhog!

● KELLY LORDAN • Doing-It Chair

AUTHENTIC RESTORATION SERVICES, INC.

Historic Restoration Balanced with Modern Life

Brian Westmoreland • General Contractor
509.270.7030 • Restoration@icehouse.net

LICENSED ~ BONDED

ADVERTISEMENT

THE 2017 OLD HOUSE WORKSHOP SERIES

The workshop ran for three consecutive Tuesdays in February from 6 to 8:30 p.m. featuring these exciting topics of interest:



- **LANDSCAPE WALLS** • ROMANCING THE STONE (FEBRUARY 14)
- **EXTERIOR WALLS** • BRICK BY BRICK (FEBRUARY 21)
- **INTERIOR WALLS** • IF WALLS COULD TALK (FEBRUARY 28)



Saturday April 29

EXPERIENCE THE CHARM OF A CATERED TRADITIONAL ENGLISH TEA

HISTORIC CORBIN ART CENTER
507 WEST 7TH • SPOKANE • WA

TEA SEATINGS
12:00 NOON AND 2:00 PM

PRESENTATION
Kathy Hutton, Horticulturist
1:00 PM
"Native Perennials:
The Original Heritage Garden Plants"

\$25 FOR MEMBERS
\$30 FOR NON-MEMBERS

RESERVE BY
Monday, April 24TH at
www.HeritageGardens.org

FOR DETAILS, CALL
509.714.3955

GARDEN TOURS
12:00 NOON AND 2:00 PM
VENDORS & DOOR PRIZES



NOVEMBER 15, 2016 THRU MARCH 13, 2017

LIFETIME MEMBERS

Carol Santantonio
Walt & Karen Worthy

ADVISORY COUNCIL MEMBERS

Mark Anderson ● Spokane Public Schools
Catherine Brazil ● University of Washington
Rich Chase
Shawn O'L Higgins ● Oxalis Group LLC
Jane Johnson
Kim Pearman-Gillman ● McKinstry
Bill Simer ● Eide Bailly

ADVISORS

Joanne Moyer ● Advisor Emeritus
Megan Duvall ● Spokane Historic Preservation Officer

FRIEND LEVEL

Cecilia Benzel
Cathy Borste
Kevin Brownlee
Kathryn Burk-Hise
Jeff Burnett & Teena Kurshner-Burnett
Patrcia & Phillip Butterfield
Rose Degelman
James & Gloria Fox
Alice & David Galeotti
Stephen & Lauren Gilbert
Scott Hunter
Gwen Kelly
Chuck & Marian Lehman
Susana Lopez
Tim & Rachel Martin
Gina McKinzie
Mary Kay & Harol Melli
Joyce Miller
Mary Moore
Jerry Ressa
Kris & Steven Roark
Roy Sonnema & Debra JD Witt
St. Michael Church & Academy
Blair & Susan Strong
Susan & Robert Walker
Toni White
Ann Wick
Shirley Wilson

ADVOCATE LEVEL

Kathleen & Michael Cannon
Sharon Daggett & Andy Tom
Dana Dalrymple
Mary Francis Gence
Larry & Shirley Grossman
Lynn & Dave Mandyke
Ellen Robey
Fritz Rosekrans & Mary Lively
James & Patricia Sawyer

CENTURION LEVEL

Jerry & Patty Dicker

Michael Flannery & Dean Lynch
Dr. Sam & Jane Joseph
Joe & Alison Nowakowski
Kim Pearman-Gillman
Diane Quincy
Bill & Catherine Rafferty
Dan & Margaret Ray-Bear
Marcia Smith
Glenn Tanner & Christine Belfiori
Kim & Susan Traver
Robert & Nancy Young

PRESERVER LEVEL

Cory Colvin
Austin & Francesca Depaolo
Charlotte Yeomans

PATRON LEVEL

Rick & Julie Biggerstaff
Paul & Janet Mann
Larry & Julie Milsow
Steve & Tresa Schmautz

SPONSORS

Authentic Restoration Services, Inc.
The Broadway Group
Hanson Carlen Architecture & Construction
John & Roynane Lisk
Paint Crafters Plus, Inc.

OUR SPA MEMBER HOLIDAY CELEBRATION & FUND-RAISER

AT THE

HISTORIC DILL HOUSE "CLIFF AERIE"



2016

UPDATE

LINKING SPOKANE'S PAST & FUTURE • PUBLISHED QUARTERLY • SPOKANEPRESERVATION.ORG



308 WEST FIRST AVENUE, SUITE 100
PO Box 785
SPOKANE, WA 99210

RETURN SERVICE REQUESTED

SPA MISSION STATEMENT

THE MISSION OF SPOKANE PRESERVATION ADVOCATES IS TO PRESERVE AND ENHANCE THE HISTORIC CHARACTER OF SPOKANE AND SPOKANE COUNTY THROUGH ADVOCACY, EDUCATION AND PRESERVATION.



JOIN US AT SPOKANEPRESERVATION.ORG OR FILL OUT AND RETURN THIS FORM WITH YOUR CHECK TO: SPA • PO BOX 785 • SPOKANE, WA 99210

JOIN SPOKANE PRESERVATION ADVOCATES NOW! YOUR SPA CONTRIBUTIONS ARE TAX-DEDUCTIBLE

NAME(S) _____

ADDRESS _____

PHONE _____ EMAIL _____

CHOOSE YOUR LEVEL OF MEMBERSHIP ✓

- NEW MEMBER.....\$10
- COUPLE..... \$20
- FRIEND.....\$25
- ADVOCATE.....\$50
- CENTURION.....\$100
- PATRON.....\$500
- BENEFACTOR \$1000
- I would like to make an additional contribution of \$_____ to the **HERITAGE FUND**, SPA's fund for local preservation projects.

GREAT BENEFITS FOR BEING A MEMBER OF SPA

- **QUARTERLY "SPA UPDATE"** newsletter by email of U.S. Mail
- **UPDATES** on critical preservation issues
- **MEMBERSHIP MEETINGS** held in unique historic buildings
- **INVITATIONS** to special events throughout the year
- **GREAT OPPORTUNITIES** to join a committee and volunteer
- **COMMUNITY CONNECTIONS** with civic-minded folks in our community

SPA VOLUNTEER COMMITTEES ✓

- **LET US KNOW** if you want to volunteer on one of our SPA committees:
- ADVOCACY**
- COMMUNICATIONS**
- DEVELOPMENT**
- DOING-IT**
- EDUCATION**
- SPECIAL EVENTS**
- HERITAGE FUND**