

LINKING SPOKANE'S PAST & FUTURE

UPDATE

SPOKANE
PRESERVATION
ADVOCATES



Advocate - Educate - Preserve

JUNE 2018 • VOLUME 22 • ISSUE 2

THE HISTORIC SLAWSON-MARR HOUSE • 505 EAST 11TH AVENUE

Please welcome new San Francisco bay area homeowners Allan Nelson and Margaret Goglia! They are pleased to invite you to enjoy and tour their new home.

Their house was built in 1909 for Mr. and Mrs. Charles Slawson, a Spokane businessman who owned and managed various real estate holdings and mercantile establishments in Washington and Canada.

In 1960, the property was purchased by Dr. Thomas Marr, a brilliant Spokane physician who started the Kidney/Dialysis Center at Sacred Heart Hospital, and the Artificial Kidney Center in Spokane.

The home's historic name is the Slawson-Marr House, in honor of the property's two most historically important owners. It is a fine example of the American Foursquare residential house form embellished with influence from Prairie and Craftsman styles ~ all trending when the house was erected in 1909.

Best-known in Spokane for the Westminster Apartments in Browne's Addition, historic



(Large Photo) The handsome stately Slawson-Marr House that was relocated from Rockwood Boulevard & East 9th Avenue to 11th Avenue

(Inset Photo) The American Foursquare's welcoming front porch overlooking the neighborhood



architect Lewis Stritesky designed the Slawson-Marr House in addition to numerous buildings and houses throughout the Spokane region, Montana and Idaho.

When he retired in the 1990s, Dr. Marr donated the Slawson-Marr House and its surrounding three acres to Sacred Heart Hospital. When the hospital announced its intention to demolish the house and grounds in lieu of building a new church and retirement center, the Spokane Historic Landmarks Commission unanimously passed an emergency resolution. They called on donors and the Spokane lending community to support historic preservation by making loans for worthy historic homes in transit. Money came in, and the house was moved a few

blocks from the northeast corner of Rockwood Boulevard and E. Ninth Avenue to E. 505 Eleventh Avenue. A new foundation was built for the home in addition to copper plumbing, updated wiring, a new furnace, roof replacement, rebuilt/repainted exterior shingles, rebuilt sash window weights, and a four-car garage located beneath the home's first floor.

The grounds were landscaped with rockwork and tree plantings. The once "on-the-move" historic Slawson-Marr House is now solid and permanent, and stands as a tangible testament to accomplishment and success, resulting from a commitment to historic preservation.

• LINDA YEOMANS
Spokane Preservation Consultant & Historian



JUNE 2018 QUARTERLY MEETING

PLEASE JOIN SPA
AT THE HISTORIC
SLAWSON-MARR
HOUSE

505 EAST 11TH AVENUE
TUESDAY, JUNE 12TH • 5:30 p.m.

Members and guests are encouraged to bring a bottle of wine or an hors d'oeuvre to share

THE EVENT IS
COMPLIMENTARY

SPA BOARD

EXECUTIVE COMMITTEE OFFICERS

- Ann M. Price**
PRESIDENT..... 344.1065
- Jennifer Fees**
VICE-PRESIDENT..... 344.1065
- (Pending)**
SECRETARY.....344.1065
- Shaun Skidmore**
TREASURER..... 344.1065
- Ann Kienholz Jurcevic**
PAST PRESIDENT.....344.1065

COMMITTEE CHAIRS, ET AL

- Joanne Moyer**
Paul Mann
ADVISORS EMERITUS.... 344.1065
- Barbara T. Clapp**
Karen Dorn Steel.... 344.1065
ADVOCACY
- (Pending)**
COMMUNICATIONS 344.1065
- Patti Simpson Ward**
ART DIRECTOR *UPDATE* ..344.1065
- Tresa Schmautz**
DEVELOPMENT..... 344.1065
- Kelly Lordan**
DOING-IT CHAIR 344.1065
- Dana Dalrymple**
EDUCATION..... 344.1065
- Virginia Carter**
HOSPITALITY CHAIR..... 344.1065
- (Pending)**
HERITAGE GRANTS 344.1065
- Sheri Peters**
Becky Holley Gupta
Bridget Piper
MEMBERS AT LARGE.... 344.1065
- Megan Duvall**
HISTORIC PRESERVATION
OFFICER 625.6983

SPA STAFF

- Dave Shockley** 344.1065
EXECUTIVE COORDINATOR

All rights reserved. No part of this publication may be reproduced in any form without the express written permission of Spokane Preservation Advocates. Authors' opinions do not necessarily reflect the official policies of Spokane Preservation Advocates nor the editor or publisher. ● While every effort has been made to avoid errors, Spokane Preservation Advocates does not assume any liability for errors or omissions.

MESSAGE FROM OUR PRESIDENT

Greetings SPA Members and Friends,

Finally, after what seemed like a too long, too cool wait, spring has gloriously arrived. Our community joyously celebrates spring in big ways ~ Bloomsday, the Lilac Festival, ArtFest ~ and in smaller ways ~ Mother's Day events, graduations and long-awaited outdoor activities. We enjoy the sense that all is new and renewing.

For SPA, spring is the beginning of our organizational year, the time that we renew our board of directors, review our successes for the past year and plan forward to summer, fall and winter activities.

Our committees are floating new ideas around, looking for ways to renew our commitments to educate, advocate and preserve as Spokane grows and develops. Our most visible committees, Advocacy and Education, are eager to seize opportunities to communicate the values of historic preservation and help make them a reality for our neighborhoods. It is an exciting time of year!

More than ever, our success depends on your renewed volunteer energy, your voices, your sponsorships and your ideas. Please join us in our ever-renewing efforts to make friends, to raise funds and to enjoy the excitement of historic preservation.

● ANN M. PRICE • President, Spokane Preservation Advocates



SPA Board President,
Ann M. Price

TABLE OF CONTENTS

- PAGE 1 ● LEAD ARTICLE**
- The Historic 1909 Slawson-Marr House
 - June 12th Meeting Notice
- PAGE 2 ● YOUR ORGANIZATION**
- Board & Committee Chairs
 - President's Message
 - Save the Date! September Tour of Historic Homes
 - Moore-Turner Heritage Gardens Open & More
- PAGE 3 ● ADVOCACY & GRANTS**
- Advocacy Update
 - Heritage Grant Fund
- PAGE 4 ● TWO SPA BENEFITS**
- The Pub Crawl
 - Sparkle & Spend
- PAGE 5 ● HISTORIC PRESERVATION UPDATE**
- Historic Preservation Update on Three Buildings
- PAGE 6 ● PRESERVE • WA FELLOWSHIP AND SPA SPONSORS**
- SPA Sponsors Young Preservationists
 - SPA Sponsors
- PAGE 7 ● MEMBERSHIP**
- Updated List of New & Renewing ~ All Levels
- PAGE 8 ● JOIN SPA**
- SPA Mission Statement
 - Become an SPA Member

SAVE THE DATE!

Mark your calendars for the
2018 19TH SPA TOUR OF HISTORIC HOMES

- 5-6 Homes at Historic Corbin park
- Sun., Sept. 30 • Noon to 4
- Admission • \$20 ea.



THE MOORE-TURNER HERITAGE GARDENS

ARE
OPEN
& TOURS HAVE BEGUN!
PLEASE VISIT US AT
HeritageGardens.org



PRESERVATION/DEMOLITION ORDINANCE

● As the winter winds blew, the SPA advocacy committee became very conversant with the proposed changes to the city's Preservation/Demolition Ordinance. We attended relevant informational meetings, read pages of ordinance and testified in front of the City Plan Commission and the City Council in support of these changes.

THANK YOU! ● SPA's efforts paid off when the Ordinance passed both the City Plan Commission and City Council. Many thanks to our SPA members, and advocacy committee, City Council member Lori Kinnear, and Megan Duvall, City/County Historic Preservation Officer.

WASHINGTON STATE UNIVERSITY CONNECTION

● On April 25th, WSU architecture professor, Matt Cohen's Masters students presented their ideas for creative reuse of the Jensen Byrd Building on the Spokane Higher Ed campus. The future of this largest remaining brick warehouse building is uncertain because no viable option for its re-development has materialized. Kudos to the students for their creative, professional and



The Historic Jensen-Byrd Building in Spokane's University District

well-thought-out proposals. SPA will work with Cohen to support additional publicity from the presentation to help raise awareness of re-development options.

FALLOUT FROM ECONOMIC GROWTH ● On a cautionary note, Spokane is undergoing a period of economic growth which brings development and demolition. There are many cranes at work downtown and changes are afoot for such things as building height and infill. Our SPA membership can help to educate neighborhoods on the value of creating Local Historic Districts to maintain their unique character.

GOOD NEWS IN BROWNE'S ADDITION ● The Browne's Addition neighborhood council has launched an effort headed by president, Rick Biggerstaff to establish a Local Historic District. The SPA advocacy committee hopes to partner with the neighborhood in their efforts.

● BARB CLAPP • SPA Advocacy Chair

ATTENTION! SPA ACTIVISTS NEEDED!

- KEEP SPOKANE'S UNIQUE CHARACTER.
- CONTACT BARB CLAPP ABOUT OUR PROJECTS!
- EMAIL • BTCLAPP@GMAIL.COM

HERITAGE GRANT FUND

The SPA Heritage Fund is pleased to partner again with the Jonas Babcock Chapter National Society Daughters of the American Revolution (DAR) to create a monument at Greenwood Memorial Terrace to recognize **Edward J. Bricknell**, an early influential Spokane businessman and philanthropist. As president and founder of, among others, Traders National Bank, Spokane Mill and Manufacturing Company; president of Holley, Mason, Marks & Co.; and Spokane Water Power Company, he became one of the wealthiest men in the state. In 1888, he joined several prominent citizens to create the Greenwood Cemetery Association. The SPA board approved a matching grant of \$2,500 for this project.

The board also approved grants of \$750 each toward completion of nominations for the Local Register of Historic Places for residences currently owned by **Bill and Jennifer Fees**, **James and Connie Long**, and **Paul and Suzanne Markham** to support a portion of the cost of completing nominations for the Spokane Register of Historic Homes.

The Heritage Fund is a result of SPA fundraising efforts including the SPA Autumn Tour of Historic Homes. The grants committee invites you to provide suggestions about buildings, homes or preservation projects that you think would benefit from a Heritage Fund grant. Please contact **Dave Shockley** at info@spokanepreservation.org with your suggestions or questions.

NEW FACES IN OLD SPACES ● UPCOMING JUNE 9 PUB CRAWL



Downtown Spokane's Iconic The Old Spaghetti Factory

with good food, longevity and a rich history.

We've included four venues in the Luminaria Building ~ three budding breweries (**Young Buck**, **Steel Barrel** and **Little Spokane**) and a gourmet restaurant with its own Resident Chef Chad White at **Zona Blanca**.

Andy's Bar & Grill, with new owners, but an old name, is in the Hotel Upton Building on Spokane's Historic Register. **Whistle Punk**, a budding craft brewery serving small-batch ales, has history to be discovered during the crawl. **One Tree Hard Cider** once hosted a women's business school. **Orlison Brewing**, a former turn-of-the-century Oddfellows Lodge promotes ales, while continuing to produce lagers to share with Spokane's thirsty and history-curious.

This promises to be a fun event, where crawlers scavenge for clues and learn of characteristics from Spokane's rich past and blossoming future, built on history. Please join us where the fun begins!

- Saturday, June 9, 3:00 p.m.
- On-site registration from 2:30-4:30 p.m.
- Register online at www.spokanepreservation.org.
- Admission \$20

Participants receive drink and food specials along the route. Commemorative T-Shirts are included while supplies last. The 7:00 pm after-party, back at The Old Spaghetti Factory, will be a time for games, contests and numerous raffles.

● ANN KIENHOLZ JURCEVICH • Pub Crawl Chair

Every year, SPA's Pints for Preservation (aka pub crawl) Committee evaluates its completed event and worries about where it will find enough venues in historic buildings next year! Thankfully, the commitment to historic preservation in Spokane continues to grow. With each new year, creativity and breadth in drinking "products" emerge, and once again we are able to continue our commitment to introducing new faces in old spaces.

This year we have a mix of old and new venues in historic buildings. We will begin and end at Downtown Spokane's iconic **The Old Spaghetti Factory**, the venue that touts space, along

SPARKLE & SPEND ● NO POST-EVENT NIGHTMARE ISSUES IN 2018

THANK YOU all for making the 2018 Sparkle and Spend auction a fabulous success. As SPA's most important annual fundraiser, we raised more than \$31,000 dollars to support our historic preservation efforts. The Dessert Dash raised \$4,500 alone! Thanks to everyone for your generous support!

We received positive feedback on the change to family-style food service which kept us from those post-event nightmares of some guests waiting in an endless buffet line while others were happily eating with their friends.

Your Sparkle and Spend committee is already planning for 2019. We have booked Barrister Winery, for March 16, 2019 ~ and have even chosen the menu.

Now we turn to you for goods and services, events held in private homes, interesting vacation spots and, of course, wine!

Sarah Hancock, our Dessert Dash Queen, is leaving her post to spend more time traveling with her significant other, so we need someone to fill her shoes. Please call **Dave Shockley** at **509.344.1065** ~ and join the Auction committee!

In closing - this year's committee comprised of the following people, wish to give you a well-deserved "Thank you for bidding high and often!" They were:

● ROYNANE LISK • Sparkle & Spend Co-Chair



- JERRY BALDWIN
- MARJORIE BENDER
- JEANETTE BRENNER
- RALPH AND KAREN FISHBURN
- LARRY GROSSMAN
- ROHN AND PATTY HAHN
- JOHN AND ROYNANE LISK
- KELLY LORDAN
- LORI NICOL
- SHERI PETERS
- WENDY REPOVICH
- SHAUN AND ALICIA SKIDMORE
- DAVE SHOCKLEY
- JO ANN STEWART
- SUSAN TRAVER

HISTORIC PRESERVATION UPDATE ● PROPERTIES LISTED ON THE LOCAL REGISTER AS HISTORIC PLACES IN MARCH 2018

BARRISTER WINERY (THE HOBSON BUILDING)

Built in 1908, the Hobson Building was originally constructed as an addition to the 1906 George H. Gallagher Co. to the east.

The Hobson is a simple, two-story, brick warehouse built along the railroad tracks ~ and was originally served by the trains at grade from a concrete loading dock.

After the railroad was raised onto the viaduct in 1916, the warehouse owners were forced to reinvent the building to serve distribution from the railroad through the second floor.

The Hobson Building was reviewed at the March 2018 Spokane Historic Landmarks meeting.

COOPER-GEORGE APARTMENT BUILDING & GARAGE

The Cooper-George is a 13-story apartment building rising 130 feet above a steep hillside on the lower South Hill. It shows characteristics of the International style.

The 144 apartments ~ as well as a two-story garage ~ were constructed in 1952 as a luxury building complex intended to attract both professionals as well as retirees.

The building was just completely rehabilitated for new market-rate apartments.

MCALLEN FARMHOUSE

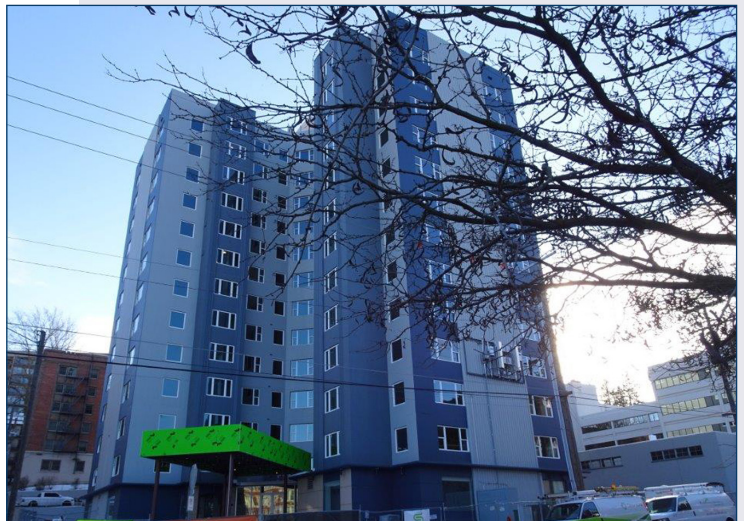
The 1906 McAllen Farmhouse on Paradise Prairie is a fine example of the Folk Victorian style adapted for many farmhouses erected in rural Spokane County at the turn of the 20th Century.

In 1890, George and Rosa McAllen began homesteading 160 acres on Paradise Prairie, and in 1897, were awarded a USA Patent Warranty Deed for "proving" their homestead land with farming and ranching operations.

The farmhouse was moved from a location on a nearby piece of property in 2005. However, the rural setting is more than likely quite similar to where the house was originally located only a quarter of a mile away.



The historic Hobson Building, home of Barrister Winery



The Cooper-George Apartment Building & Garage



The Folk Victorian-style McAllen Farmhouse

SPA SPONSORS YOUNG PRESERVATIONISTS

The Washington Trust for Historic Preservation launched the PreserveWA Fellowship in 2017 as a way to invite more diverse voices to RevitalizeWA, Washington's annual statewide preservation and Main Street conference. The competitive fellowship is targeted toward students and young professionals interested in the fields of historic preservation and downtown revitalization. Fellows receive free conference registration, a travel stipend and an opportunity to be paired with a mentor in their field of interest. The fellows and mentors meet at the conference and carry on a dialogue thereafter.

The Washington Trust extends deep gratitude to Spokane Preservation Advocates for its \$1,000 donation in support of the PreserveWA Fellowship, which allowed us to open the opportunity to more young people in its second year. In 2018, seven fellows were selected, including four from



the Spokane area. Two fellows, **Adrianna Horsey** and **Katlin Bowers**, are students at Whitworth University, and two, **Patrick Hanley** and **Katie Enders**, are students at Eastern Washington University. Along with three other fellows from across the state, these four attended RevitalizeWA in Port Townsend in April.

PreserveWA Fellows represent a wide range of academic pursuits, from law to urban planning, with shared interest in community vitality and preservation. Each will be sharing reflections in upcoming issues of the Washington Trust quarterly magazine, *This Place*. Visit preservewa.org for info.

By Breanne Durham, Washington Main Street Coordinator

SPA IS GRATEFUL TO THESE GENEROUS SPONSORS:

- JOHN & ROYNANE LISK
- LARRY STONE & JAN JECHA
- PLUS . . .



FEBRUARY 16, 2018 THRU MAY 10, 2018

LIFETIME MEMBERS

Carol Santantonio
Walt & Karen Worthy
Barbara & Richard Clapp

ADVISORY COUNCIL MEMBERS

Mark Anderson • Spokane Public Schools
Roger Chase
Shaun O'L Higgins • Oxalis Group, LLC
Jane Johnson
Kim Pearman-Gillman • McKinstry
Bill Simer • Eide Bailly

ADVISORS

Paul Mann • Advisor Emeritus
Joanne Moyer • Advisor Emeritus
Megan Duvall • Spokane Historic Preservation Officer

INDIVIDUAL LEVEL

Janice Baker
Marcella Bennett
Cathy Borste
Bob & Mary Anne Brown
Kevin Brownlee
Paul Calabro
Connie Emry
Charles Fox
Darcy Gravelle
William Harbert
Emily Logan
Joseph & Oradee Nunes
Heidi Pierce
Ray Rast

Roberta Rehbock
Julie Saucier
Darlene Scalise
St Michael Church & Academy
Norma Stejer
Karen Van Klaveren
Pam Wilcox Mann

FAMILY LEVEL

Karen & Jerry Allen
Carole Anderson & Michael Turner
Kathleen Cannon
Gillian Cranehahn & Louie Flores
Katherine Cronin
Jean Cunningham
William Drew
Marilyn Elliott
Karin & Wilma Engstrom
Larry & Shirley Grossman
Louise Kodis & David Glass
Bill & Kathy Kostelec
Michael Nadeau
Dick & Connie O'Brien
Kathi Oliver-Buck & Mike Buck
Frank Ping & Sheila Gates-Ping
Fritz Rosekrans & Mary Lively
Laree Shanda
Andy Tom & Sharron Daggett

CENTURION LEVEL

Robin McDonald & Robert Ray
Marilyn Ring-Nelson
Scott Shapiro
Shaun & Alycia Skidmore
Teresa Smick

PRESERVER LEVEL

Cory Colvin
Austin & Francesca Depaolo
Joe & Mary Dinnison
Suzanne & Karl Fleming
Charlotte Yeomans

PATRON LEVEL

Rick & Julie Biggerstaff
Paul & Janet Mann
Larry & Linda Milsow
Jennifer & Phil Ogden
Paul & Bridget Piper
Greg & Alicia True

BENEFACTOR LEVEL

Steve & Tresa Schmautz
Larry Stone & Jan Jecha

SPONSORS

A & A Construction & Development, Inc.
Authentic Restoration Services, Inc.
Hamilton Studio
Hanson Carlen • Architecture & Construction
Interurban Development
JAKAVA, LLC
Roynane & John Lisk
Paint Crafters Plus, Inc.
Scafco Corporation
SDS Realty, Inc.
Larry Stone & Jan Jecha
Patti Simpson Ward • Fine Art, Design & Art Direction

UPDATE

LINKING SPOKANE'S PAST & FUTURE • PUBLISHED QUARTERLY • SPOKANEPRESERVATION.ORG



Advocate - Educate - Preserve

108 N WASHINGTON STREET • SUITE 404
PO BOX 785
SPOKANE, WA 99210

RETURN SERVICE REQUESTED

SPA MISSION STATEMENT

THE MISSION OF SPOKANE PRESERVATION ADVOCATES IS TO PRESERVE AND ENHANCE THE HISTORIC CHARACTER OF SPOKANE AND SPOKANE COUNTY THROUGH ADVOCACY, EDUCATION AND PRESERVATION.



JOIN US AT SPOKANEPRESERVATION.ORG OR FILL OUT AND RETURN THIS FORM WITH YOUR CHECK TO: SPA • PO BOX 785 • SPOKANE, WA 99210

JOIN SPOKANE PRESERVATION ADVOCATES NOW!

YOUR SPA CONTRIBUTIONS ARE TAX-DEDUCTIBLE

NAME(S) _____

ADDRESS _____

PHONE _____ EMAIL _____

CHOOSE YOUR LEVEL OF MEMBERSHIP ✓

- STUDENT.....\$10
- INDIVIDUAL.....\$30
- FAMILY.....\$50
- CENTURION.....\$100
- PRESERVER.....\$250
- PATRON.....\$500
- BENEFACTOR...\$1000
- I would like to make an additional contribution of \$ _____ to the **HERITAGE FUND**, SPA's fund for local preservation projects.

GREAT BENEFITS FOR BEING A MEMBER OF SPA

- **QUARTERLY "SPA UPDATE"** newsletter by email and/or U.S. Mail
- **UPDATES** on critical preservation issues
- **MEMBERSHIP MEETINGS** held in unique historic buildings
- **INVITATIONS** to special events throughout the year
- **GREAT OPPORTUNITIES** to join a committee and volunteer
- **COMMUNITY CONNECTIONS** with civic-minded folks in our community

SPA VOLUNTEER COMMITTEES ✓

- **LET US KNOW** if you want to volunteer on one of our SPA committees:
- ADVOCACY**
- COMMUNICATIONS**
- DEVELOPMENT**
- DOING-IT!**
- EDUCATION**
- SPECIAL EVENTS**
- HERITAGE FUND**